

# Moore Park to Downtown Klamath Falls Corridor Plan

Open House #3  
March 9, 2016



**KITTELSON & ASSOCIATES, INC.**  
TRANSPORTATION ENGINEERING/PLANNING

# Agenda

- Project Background
- Project Process
- Draft  
Recommendation



# Purpose of Today's Meeting

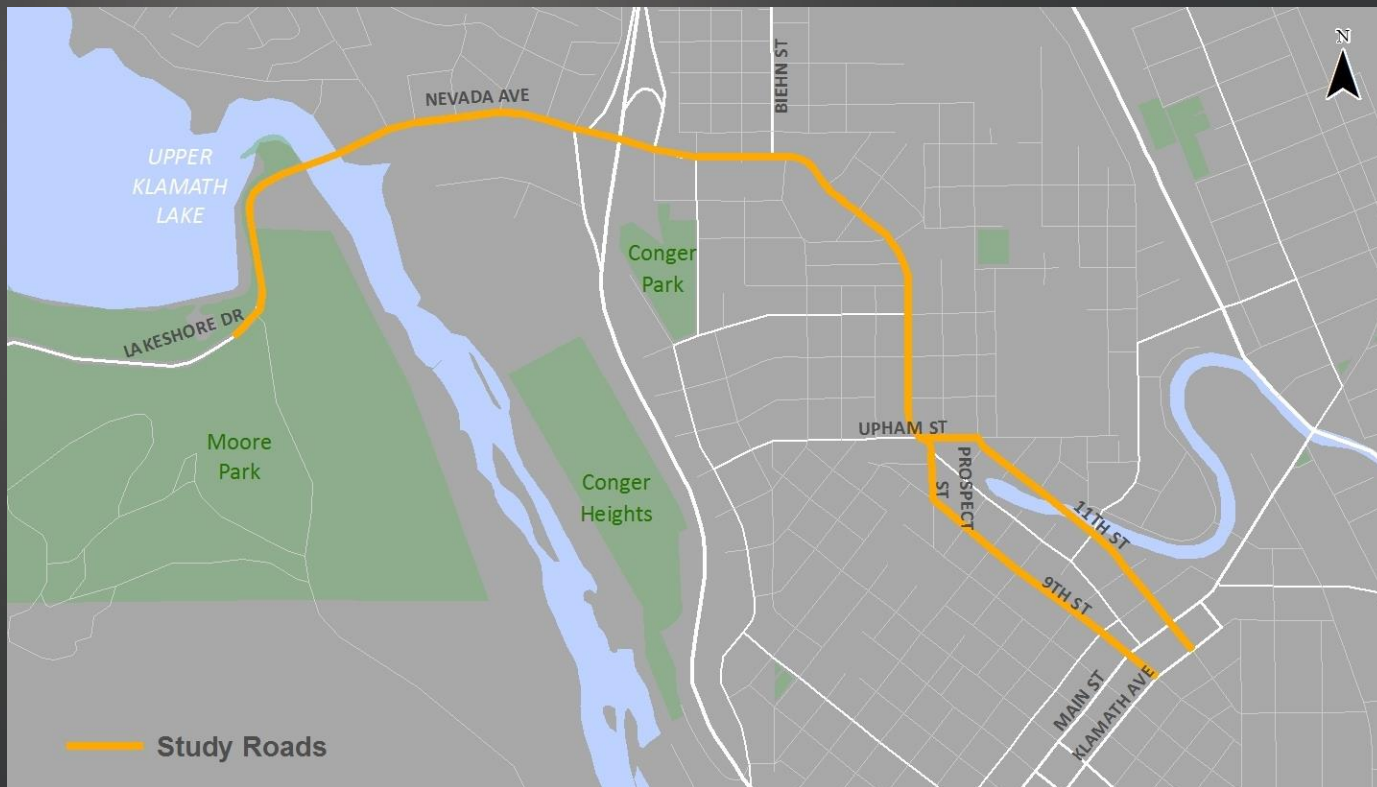
- Learn about proposed plan
- We want your ideas and opinions





# What is This Project?

- Concept Plan
- Connect Downtown – Moore Park



# Project Objectives

- Increase comfort of biking, walking, and driving for a wide range of people
- Increase physical activity
- Economic benefit

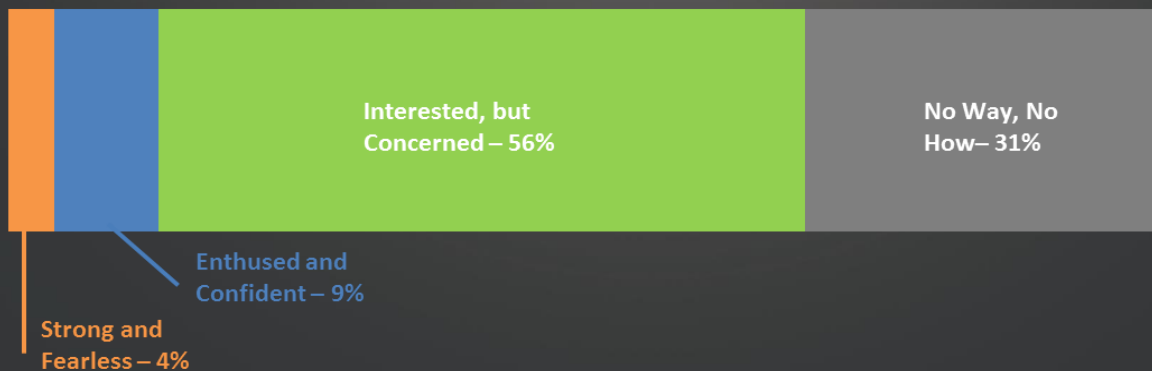
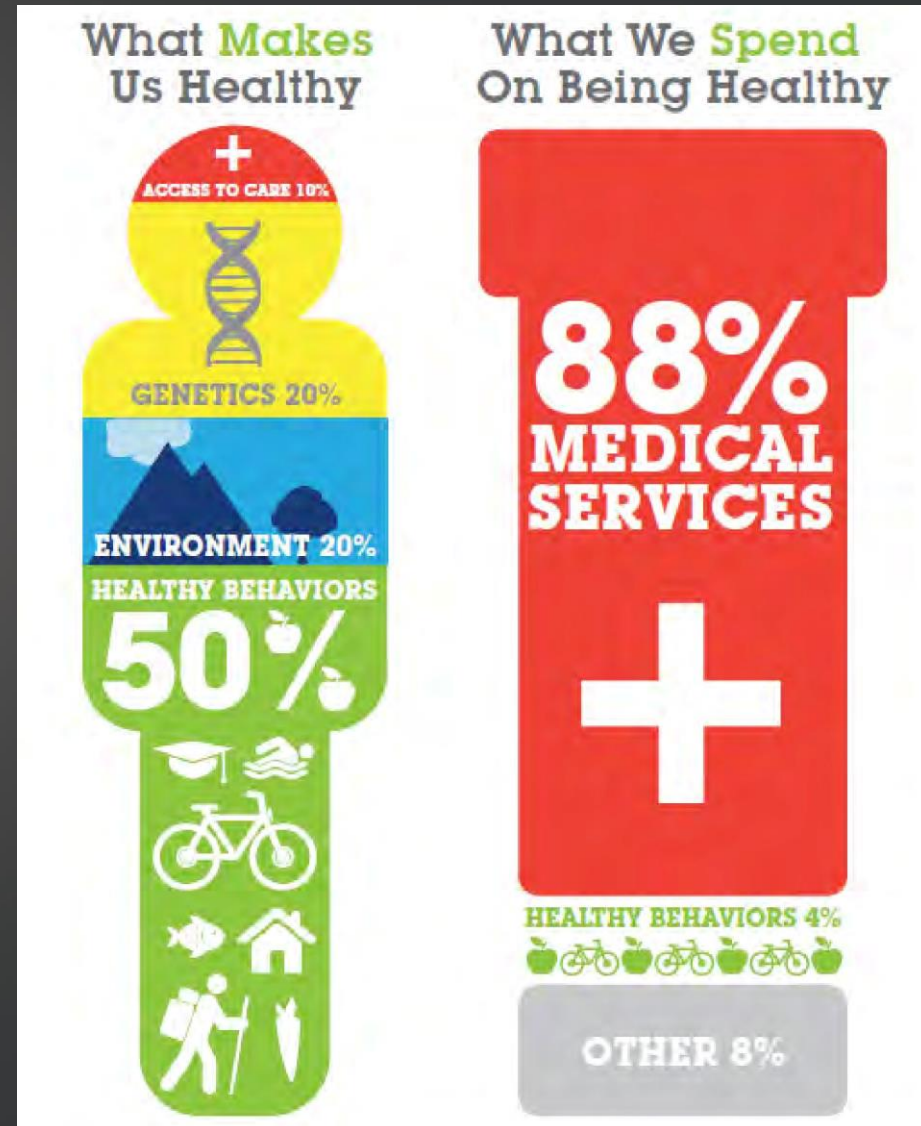


Photo: Sky Lakes Wellness Center

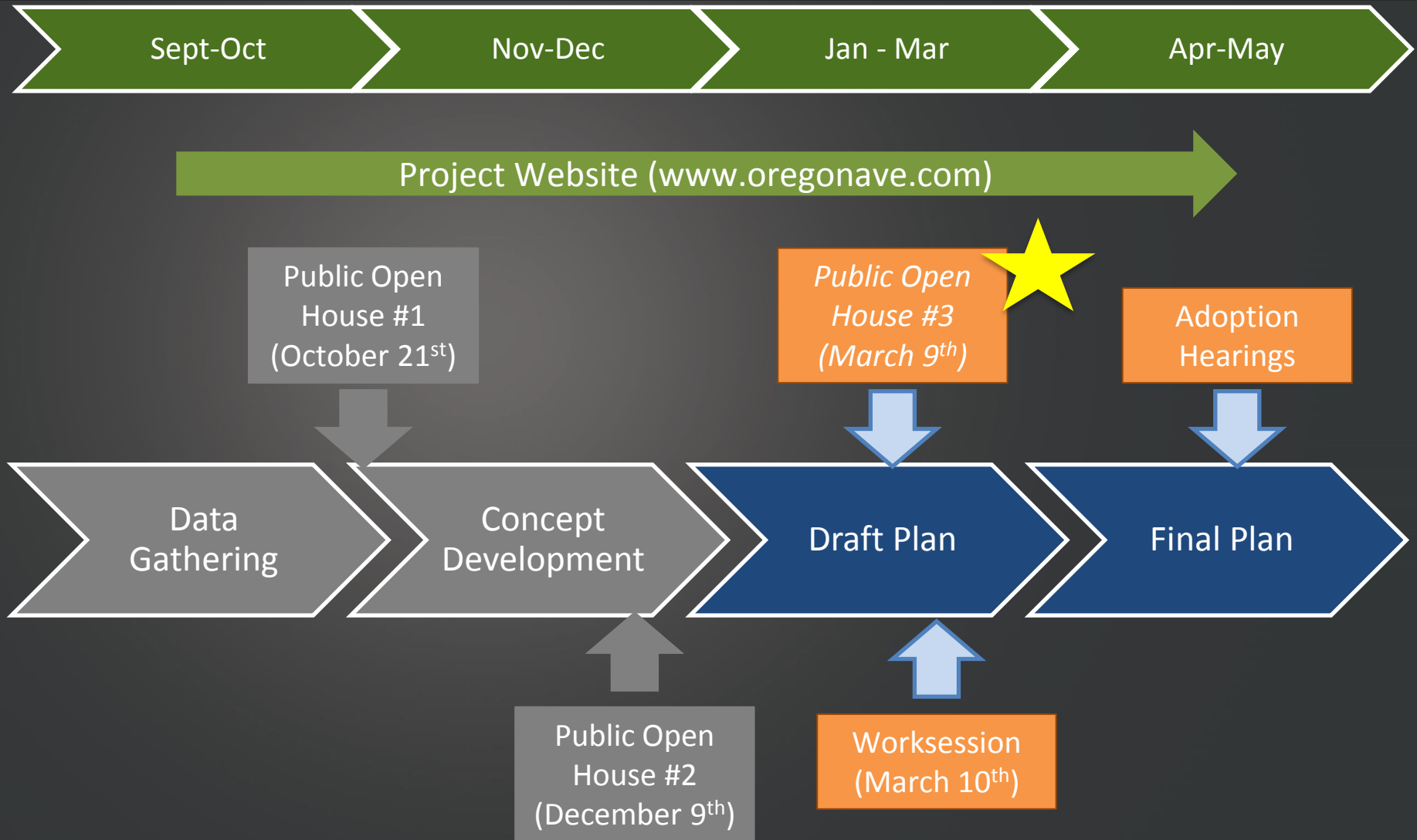


# Why This Route?

- Healthy Klamath Project
  - Lower cost of health care
  - Better health outcomes
  - Walkability/bike-ability is low
- Connects Two Popular Areas



# Project Schedule





# Feedback from Open House #1

- Safe Bicycle Route
  - Provide a buffer/barrier, if possible
- Calm Motor Vehicle Traffic
- Oregon Avenue On-Street Parking



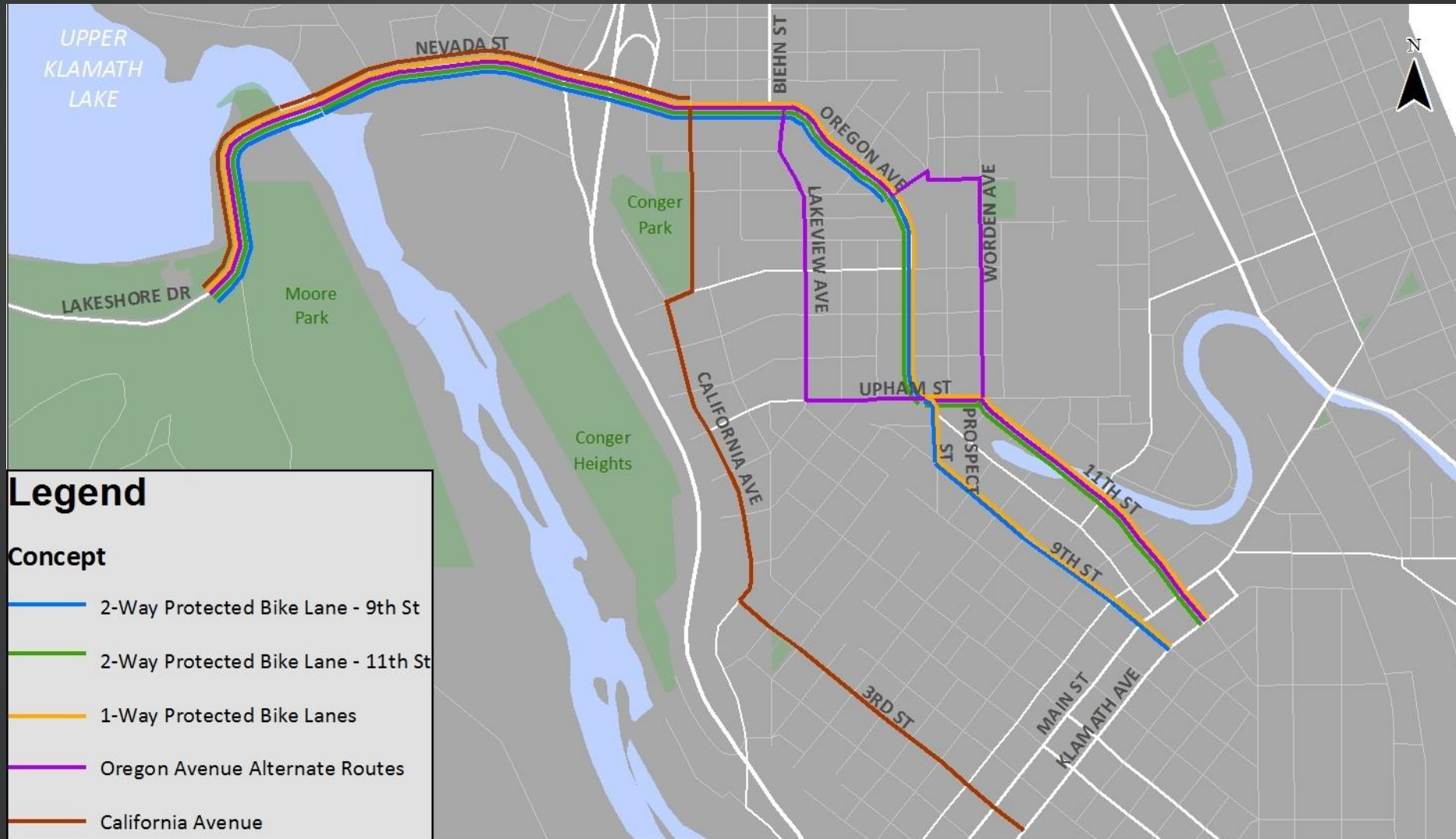


# Types of Bike Treatments





# Initial Concepts



# Three Concepts Advanced

#1



#2



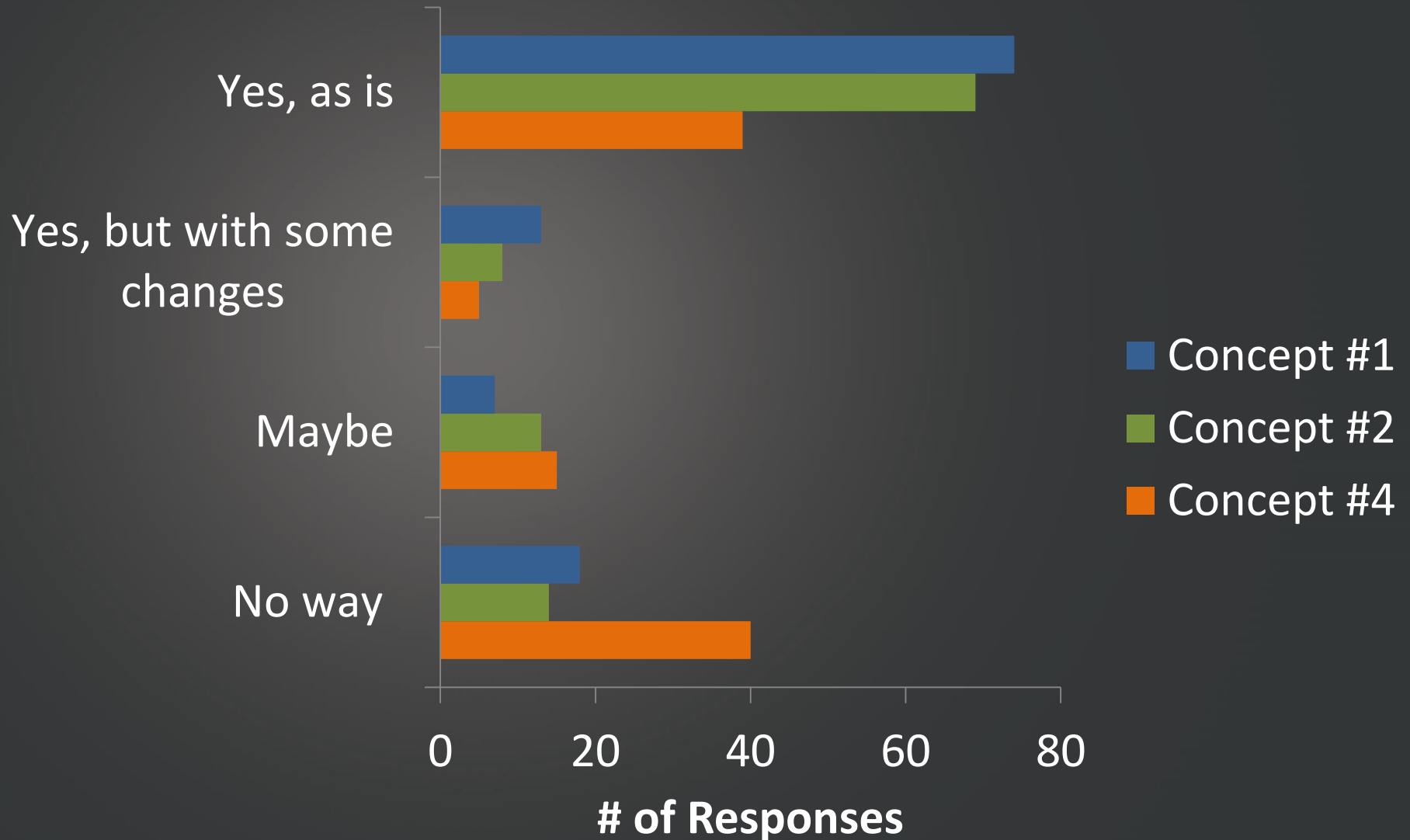
#4



KITTELSON & ASSOCIATES, INC.  
TRANSPORTATION ENGINEERING/PLANNING



# Feedback from Open House #2

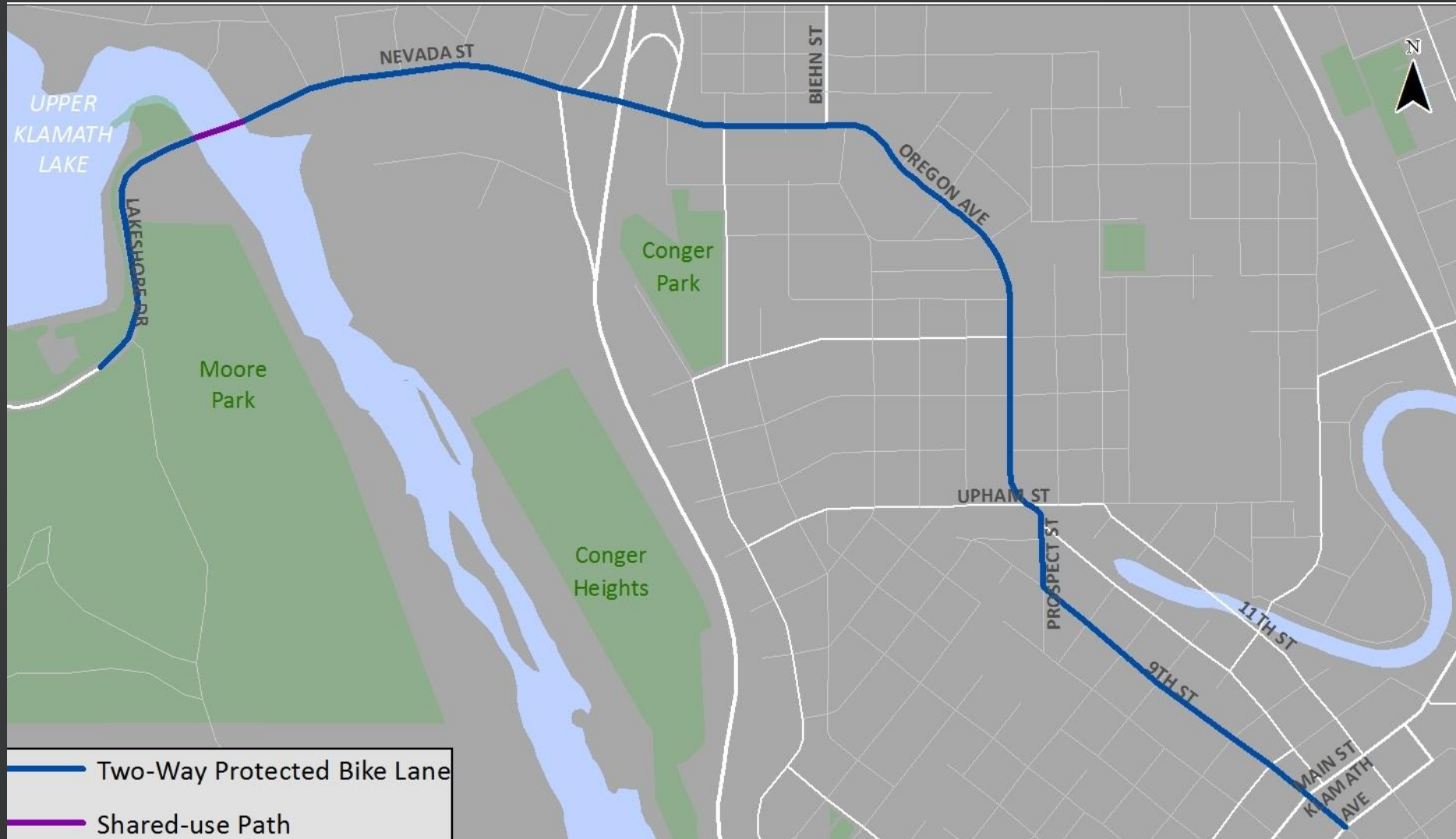


# DRAFT RECOMMENDATION



KITTELSON & ASSOCIATES, INC.  
TRANSPORTATION ENGINEERING/PLANNING

# Recommended Concept





# Recommended Concept

## 9<sup>th</sup> Street (Before)





# Recommended Concept

## 9<sup>th</sup> Street (After)





# Recommended Concept

## Oregon Avenue (Before)





# Recommended Concept

## Oregon Avenue (After)





# Recommended Concept

## Nevada Street (Before)





# Recommended Concept

## Nevada Street (After)





# Benefits and Considerations

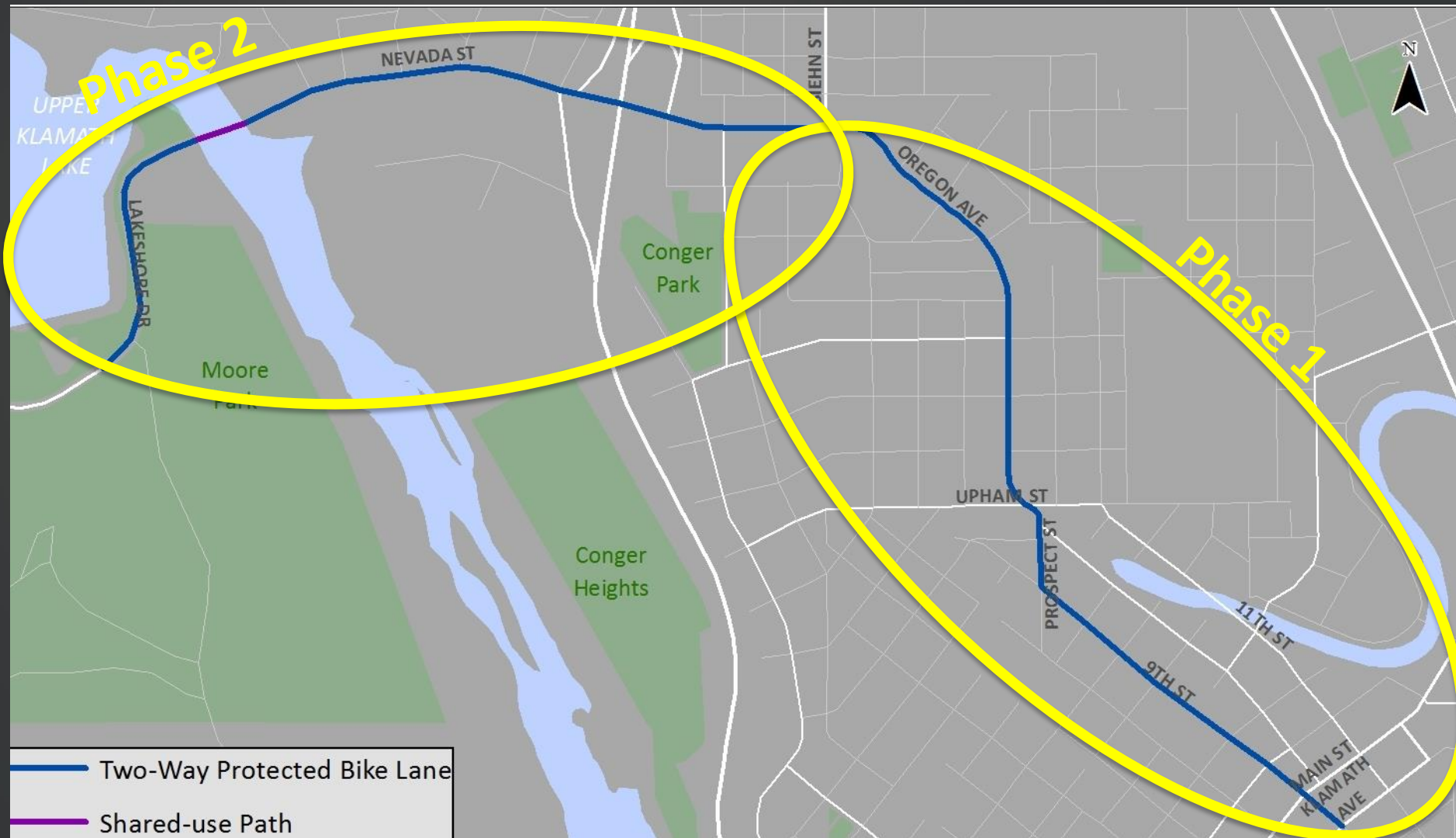
## > Benefits

- Direct
- Visible
- Business Access
- Calms Traffic

## > Considerations

- Removes Auto Lane on 9<sup>th</sup> Street
- Removes 50 (+/-) Parking Spaces on Oregon Avenue

# Implementation



# Implementation (Continued)

- Phase 1 (Downtown to Biehn Street)
  - Temporary installation
  - Adapt after trial period
- Phase 2 (Biehn Street to Moore Park)

# Next Steps

➤ Prepare Final Plan

➤ Adoption

- Late April/Early May
- Amendment to TSP
- Authorization of pilot project

